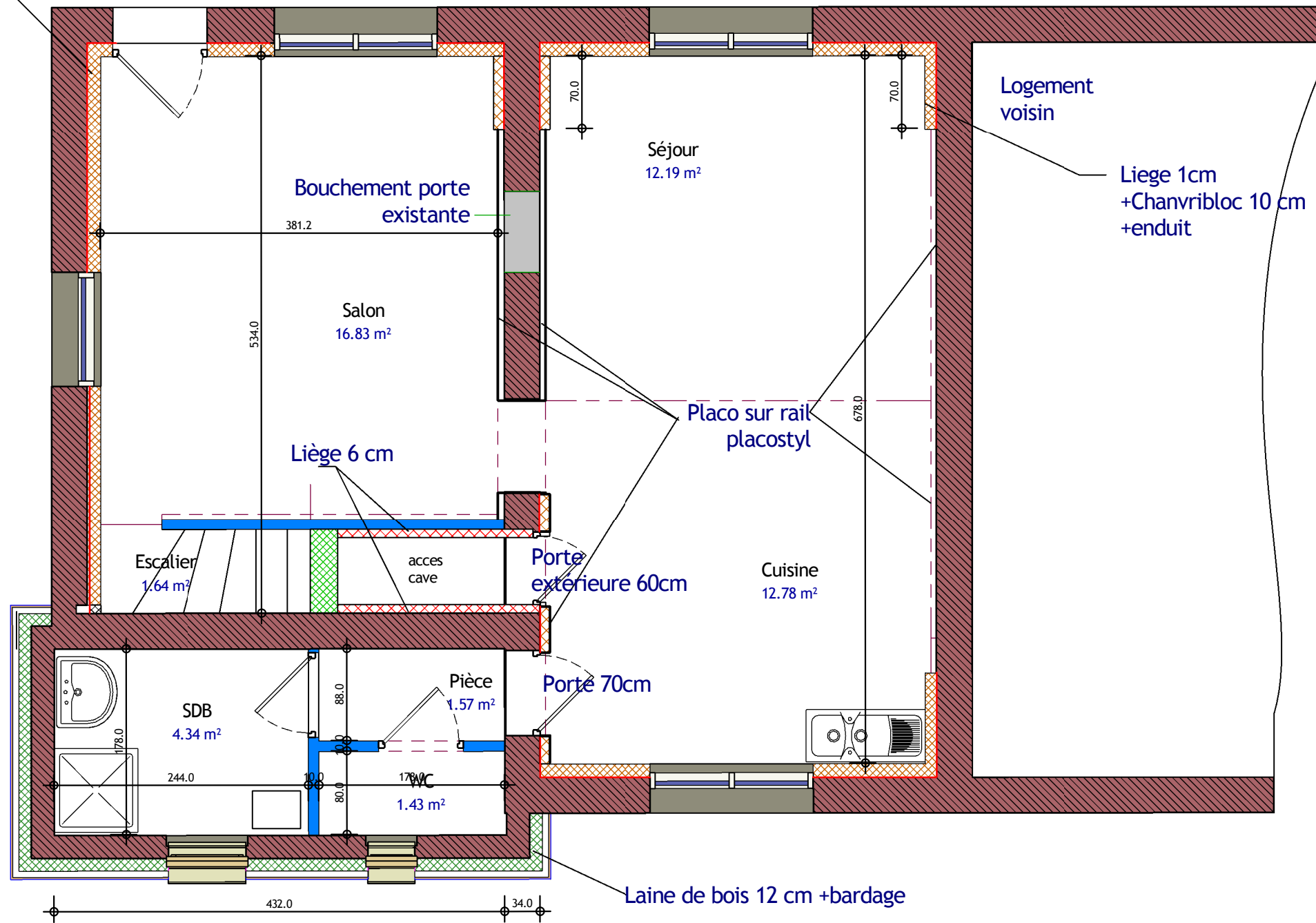



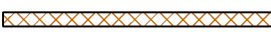


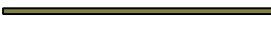




1 cm liege+Chanvribloc 10 cm +enduit



### Nomenclature des isolants

-  Liège
-  Chanvribloc
-  Laine de bois
-  Chanvribloc
-  Liège
-  Laine de bois
-  Polyuréthane
-  Fibralth
-  Polystyrène extrudé

**1** Rez de Chaussée  
Ech : 1 : 50